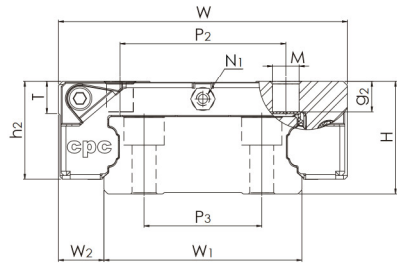
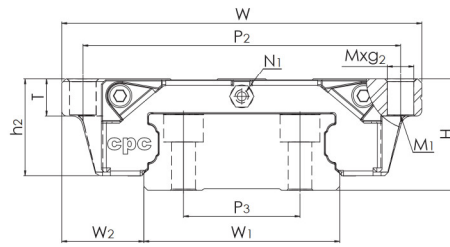


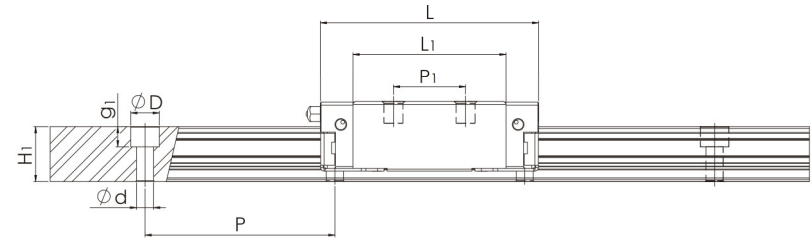
Dimension Table



WRC MN

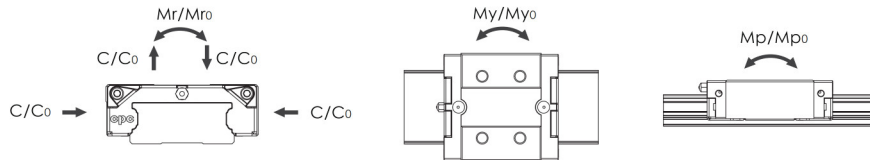


WRC FN



Model Code	Mounting Dimensions		Rail Dimensions(mm)					Block Dimensions (mm)		
	H	W ₂	W ₁	H ₁	P	P ₃	Dxdxg ₁	W	L	L ₁
WRC21/15MN	21	8.5	37	14.4	50	22	7.5x4.5x5.3	54	57.5	40.3
WRC21/15FN	21	15.5	37	14.4	50	22	7.5x4.5x5.3	68	57.5	40.3
WRC27/20MN	27	10	42	18	60	24	7.5x4.5x5.3	62	69	52
WRC27/20FN	27	19	42	18	60	24	7.5x4.5x5.3	80	69	52
WRC35/25MN	35	15.5	69	21	80	40	11x7x9	100	105	86
WRC35/25FN	35	25.5	69	21	80	40	11x7x9	120	105	86

Block Dimensions(mm)							Load Capacities (KN)		Static Moment (Nm)		
h ₂	P ₁	P ₂	Mxg ₂	M ₁	T	N ₁	C	C ₀	M _{r0}	M _{p0}	M _{y0}
18.3	19	31	M5x5	-	6	M3	9.9	17.5	315	105	105
18.3	29	60	M5x7	M4	7	M3	9.9	17.5	315	105	105
24	32	46	M6x7	-	10	M3	17.1	30.0	605	230	230
24	40	70	M6x11	M5	11	M3	17.1	30.0	605	230	230
29	50	76	M8x8	-	14	M6	30.7	57.7	1960	710	710
29	60	107	M8x14	M6	14	M6	30.7	57.7	1960	710	710



The above rating load capacities and static moment are calculated according to ISO14728 standard. The rating life for basic dynamic load rating is defined as the total 100km travel distance that 90% of a group of identical linear guides can be operated individually under the same conditions free from any material damage caused by rolling fatigue. When the standard of 50km travel distance is applied, the above basic dynamic load rating C of ISO 14728 should be multiplied by 1.26 for conversion.